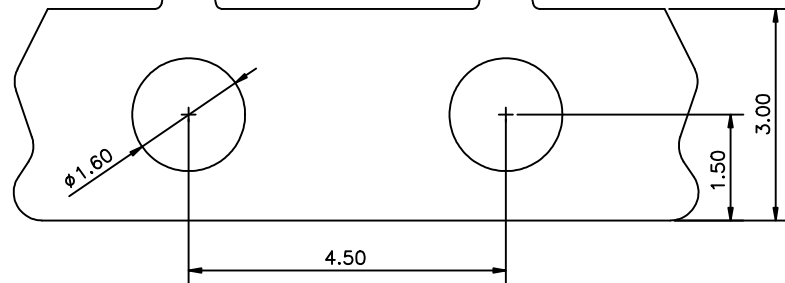
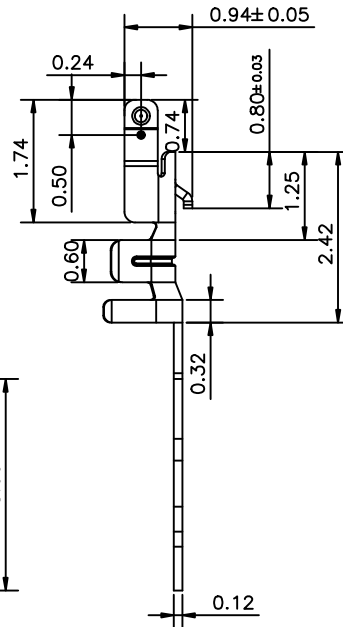
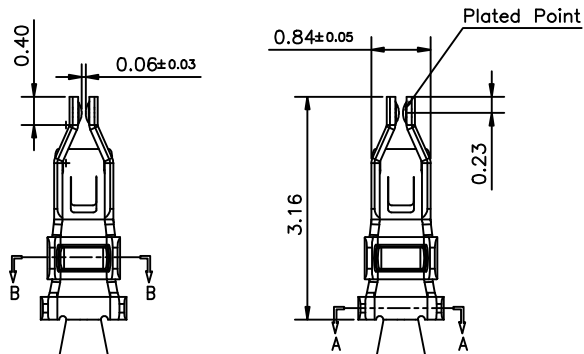
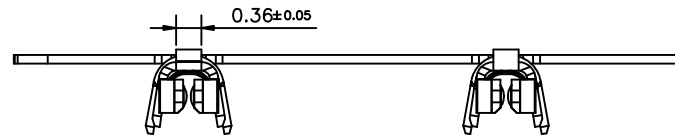


A B C D E F G H I J



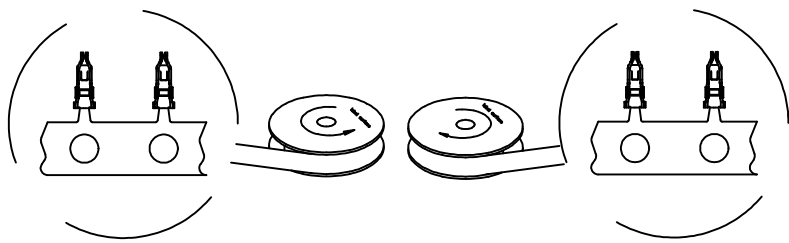
NOTES :

1. MATERIAL IS COPPER ALLOY (T=0.12mm)
2. PLATING :
 - 2.1: 50u" MIN NICKEL UNDER PLATING OVER ALL
 - 1: GOLD FLASH 1u" MIN. ON PLATED AREA
 - A: 3u" MIN GOLD ON PLATED AREA
 - N: 100u" MIN MATT TIN ON PLATED AREA
 - B: 5u" MIN GOLD ON CONTACT AREA
 - T: 10u" MIN GOLD ON PLATED AREA
 - 2: 1u" MIN GOLD ON PLATED AREA
3. WIRE RANGE: SUITABLE FOR
 - UL3302 AWG#28 OD=0.6mm
 - UL3302 AWG#32 OD=0.55mm
 - UL3302 AWG#30 OD=0.7mm
 CURRENT RATING: 1AMPERES (PER PIN)
4. CRIMPING SPEC. PLS. REFER to PS-50269-XXXX-XX;
5. CRIMPING TOOLING REF.:
 - A. CONDUCTOR CRIMPIN: W=0.85mm(REF.)
 - B. INSULATOR CRIMPING: W=0.90mm(REF.)
6. AFTER CRIMPING, CONTROL TERMINAL LENGTH: 1.0mm MAX.
7. PART NUMBER

91224-000 X X

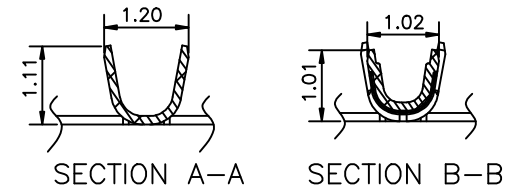
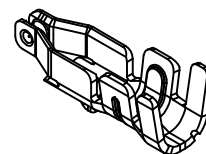
PLATING
 N: 100u" MIN MATT TIN ON PLATED AREA
 1: GOLD FLASH
 A: 3u" GOLD
 T: 10u" MIN GOLD ON PLATED AREA
 B: 3u" MIN GOLD ON CONTACT AREA
 2: 1u" MIN GOLD ON PLATED AREA

PACKING
 0: TAPE & Reel



WIND OPERATION AFTER STAMPING AND BEFORE PLATING

WIND OPERATION AFTER PLATING AND BEFORE ASSEMBLY



| | | | |
|--|----------------------|---------------------|------------------------|
| QUALITY SYMBOLS MAJOR Ⓢ CRITICAL Ⓢ GENERAL TOLERANCES (UNLESS SPECIFIED) X. ±0.5 .X ±0.25 .XX ±0.15 .XXX ±0.1 ANGLES ±2° | DRAWN BY MengMeng | DATE 23'/01/24 | |
| | CHECKED BY BRAVE | DATE 23'/01/24 | |
| | APPROVED BY BRAVE | DATE 23'/01/24 | R/FQ NO. N/A |
| | UNITS mm | | SIZE A4 |
| | SCALE 10 : 1 | SHEET NO. 1 OF 1 | REV K |
| | | | DWG NO. 91224-000XX |